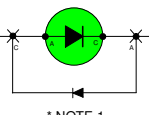
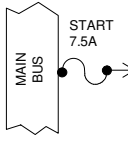


STARTER ENGAGED

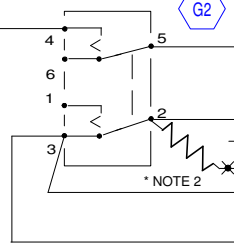
POWER DISTRIBUTION (1.1) B



LEFT MAGNETO OFF / ON / START



18AWG

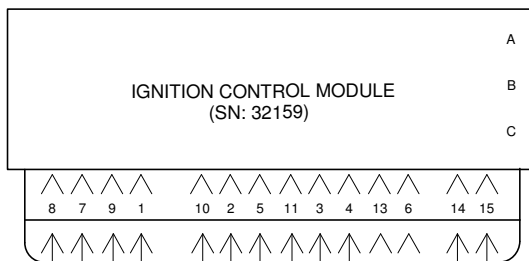
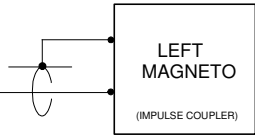


18AWG

POWER DISTRIBUTION (1.1) A

20AWG SHIELDED

ENGINE MONITOR (2.2)



G4

RG400

COIL CYLS 1-2

RG400

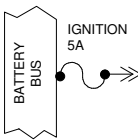
COIL CYLS 3-4

RG400

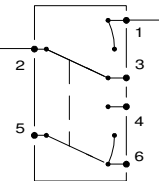
COIL CYLS 5-6

G6

RIGHT IGNITION OFF / ON - START



18AWG



18AWG

GROUND

BLACK

RED

GROUND

BLACK

WHITE

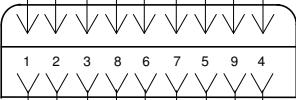
GROUND

BLACK

GREEN

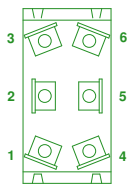
18AWG

G2 FWL



G5

TERMINAL LOCATIONS FOR S700-2-XX SERIES SWITCHES (KEYWAY UP)



PFLANZER F1 ROCKET Indianapolis, Indiana

ELECTRICAL SCHEMATIC DRAWING

**START**

Path Name: C:/My Documents/Airplane/Wiring Diagrams/Start

Drawn By: RJP

Drawing Date: 03/19/05

Page Number: 1.7

NOTE 1: This device is a 1 AMP, 30 AMP surge type 1N4005 diode that protects the LED from reverse transient current. (Radio Shack #276-1104)  
 NOTE 2: This device is a 27 K OHM, 1/2 WATT resistor that prevents magneto grounding upon instrument failure. Part supplied by EIS vendor.

Copyright © 2003 by Randy Pflanzler - Technology Professionals Consortium. All rights reserved